

5-6" Surface Mount Downlight Installation Instructions



Please read carefully and save these instructions, as you may need them at a later date.

WARNING - RISK OF ELECTRIC SHOCK. DISCONNECT MAIN POWER AT FUSE OR CIRCUIT BREAKER BEFORE INSTALLING OR SERVICING THE FIXTURE.

GENERAL - ALL ELECTRICAL CONNECTIONS MUST BE IN ACCORDANCE WITH LOCAL AND NATIONAL ELECTRICAL CODE (N.E.C.) STANDARDS. IF YOU ARE UNFAMILIAR WITH PROPER ELECTRICAL WIRING CONNECTIONS OBTAIN THE SERVICES OF A QUALIFIED ELECTRICIAN.

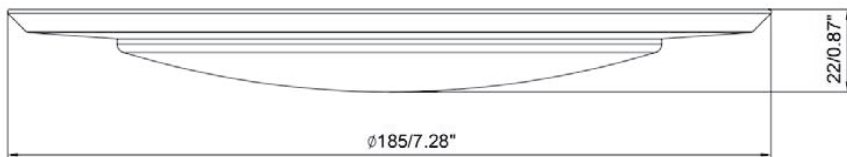
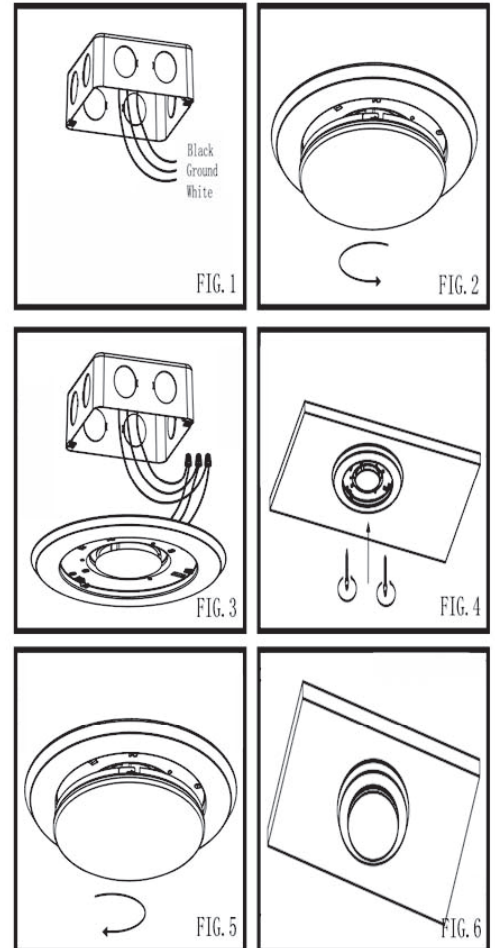
⚠ WARNING: RISK OF ELECTRIC SHOCK

- Do not make or alter any open holes in the enclosure to the wiring or electrical components during kit installation.
- To prevent wiring damage or abrasion, do not expose wiring to edges of sheet metal or other sharp objects.
- Suitable for wet locations
- Suitable for type ic or suitable for type non-ic
- Use only in open luminaires
- This device is not intended for use with emergency exits

ASSEMBLY AND INSTALLATION

This IC/AT fixture is intended for use in suspended ceilings (with or without insulation). Shut off power before installation

- Prepare fixture for recessed installation. (FIG. 1)
- Remove lens by twisting counter clockwise. (FIG. 2)
- Connect supply wires to wires on fixture with wire nuts or push wires into Quick Connector. Connect white to white, black to black, and copper wire to copper wire as grounding connection. (FIG.3)
- Arrange the wires into the back of the junction box.
- Align appropriate holes in the mounting fixture with the holes in the junction box. Using 2 of the longer screws (either #6 or #8 screws depending on the size of the holes in your junction box) attach the mounting fixture is flush with the ceiling. Do not over-tighten screws or fixture will not be tight to ceiling. (FIG.4)
- Complete the installation by turning lens clockwise to lock. (FIG.5)
- Gasket is optional.



Halco Model #	Voltage	Current	Wattage
SDL6FR15/9XX/LED	120V	0.13A	15W

5-6" Surface Mount Downlight Installation Instructions



ASSEMBLY AND INSTALLATION

INCANDESCENT HOUSINGS

- Unscrew the WING NUT inside the CAN to detach the SOCKET BRACKET from the CAN. Disengage the SOCKET from the SOCKET BRACKET. (FIG. 2)
- Thread the SOCKET ADAPTER into the SOCKET. (FIG. 3)
- Place spring on mounting bracket and complete the installation by twisting the lens on the light. (FIG. 4)
- If using TORSION SPRINGS, squeeze both TORSION SPRING arms together and insert into the TORSION SPRING SLOTS (or place spring on mounting bracket RECEIVER BRACKETS) of the CAN. (FIG. 5)
- Tuck all wires into the CAN and carefully push the RETROFIT TRIM into CAN. (NOTE: To provide enough room in shallow cans, carefully position SOCKET ADAPTER and SOCKET adjacent to the long side of the LED DRIVER prior to inserting the RETROFIT TRIM into the CAN.) (FIG. 5)

LED HOUSINGS

- Plug the FEMALE CONNECTOR of the RETROFIT TRIM onto the MALE CONNECTOR of the HALO HOUSING. (FIG. 5)
- If using TORSION SPRINGS, squeeze both TORSION SPRING arms together and insert into the TORSION SPRING SLOTS (or RECEIVER BRACKETS) of the CAN. (FIG. 5)
- Tuck all wires into the CAN and carefully push the RETROFIT TRIM into CAN. (NOTE: To provide enough room in shallow cans, carefully position SOCKET ADAPTER and SOCKET adjacent to the long side of the LED DRIVER prior to inserting the RETROFIT TRIM into the CAN.) (FIG. 5)
- Gasket is optional.

DIMMING

Dimming performance may depend on the dimmer, the dimmer range adjustment setting (for dimmers with brightness range adjustments), the wiring method, and/or the number of LED modules installed onto the dimmer circuit. For dimmer selection, Dimming control manufacturers revise their product often; for the latest list of compatible dimmers please visit our website.

Following is a list of recommended dimmers:

Brand	Lutron	Leviton
Model	DVCL-153P-WH	1A2035
	MACL-153M-WH	VP106-600W
	S-600P	1F4205
	DVLV-603P-IV	IPL06
	CT-603PG	6674
	DV-600P	6631
	DVW-603P6H-WH	
	CTCL-153PDH-WH	

